



# Mod.900 P

EN 13241-1



(89/106/CE)



**USA GLISANTA PENTRU TEMPERATURI POZITIVE**

**CU GROSIMEA FOII 70 mm**



**SLIDING DOOR FOR POSITIVE TEMPERATURE**

**WITH 70 mm THICK WING**



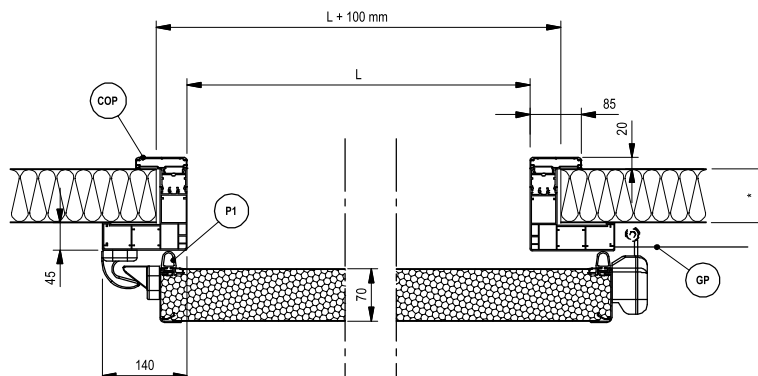
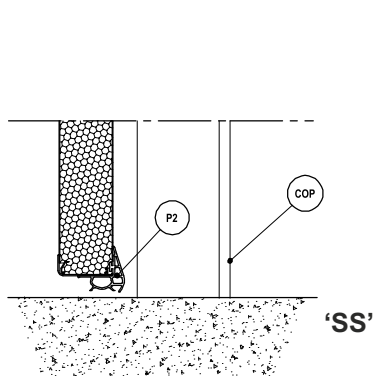
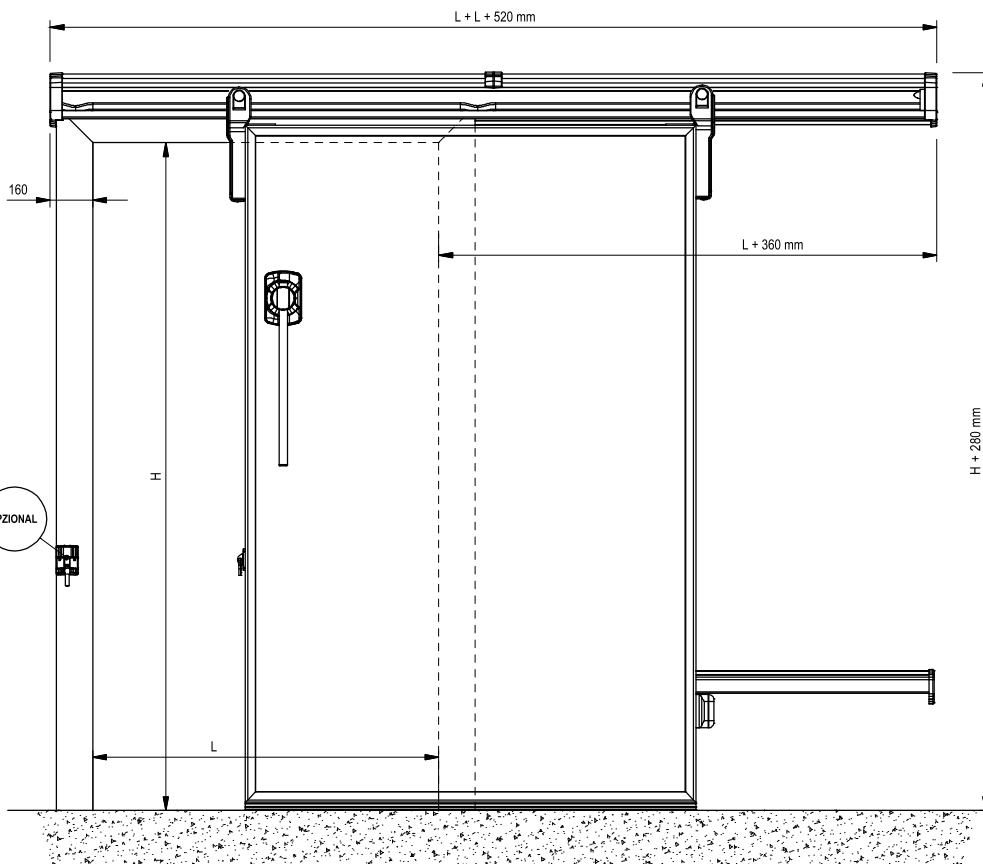
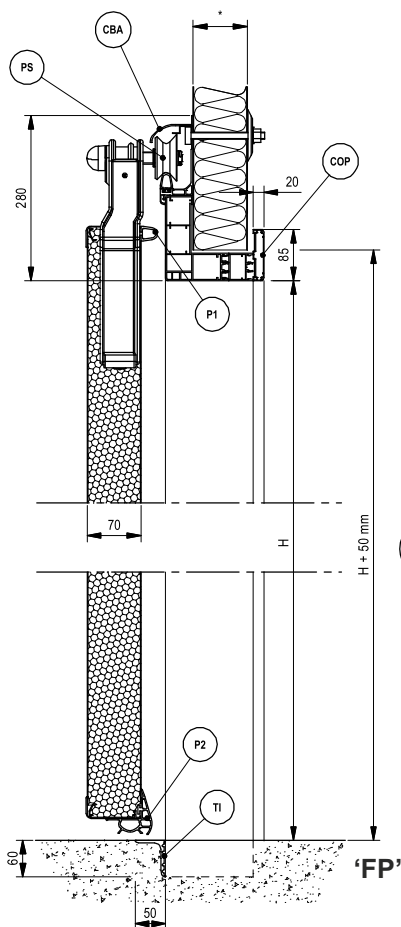
**PORTE COULISSANTE POUR TEMPERATURE POSITIVE**




**AVEC VANTAIL DE 70 mm D'ÉPAISSEUR**

MIV INSULATING SYSTEMS s.r.l.

ed.10/2011

Departamentul tehnic își rezerva dreptul de a modifica produsul fără notificare prealabilă. Schițele, dimensiunile, pozeele din broșura sunt doar pentru informare generală și nu reprezintă elemente de elaborare a proiectelor.  
 Technical Department reserves the authorization to improve its products without notice. Drawings, dimensions, positions, or advertising elements represent only general indication and not specific requirements to make projects.  
 Le bureau technique se réserve le droit de modifier le produit sans préavis. Plans, dimensions, et photos sur les documents de publicité doit être considéré à titre indicatif et donc non lié à l'élaboration d'une projet définitive.



 CARACTERISTICI TEHNICE	 TECHNICAL FEATURES	 CARACTERISTIQUES TECHNIQUES
* Panou prefabricat de grosime variabila	* Prefabricated panel	* Paroi prefabriquée
P1 Garnitura perimetrala	P1 Perimetral gasket	P1 Joint perimetral
P2 Garnitura inferioara	P2 Lower gasket	P2 Joint inferieur au sol
TI Prag din aluminiu	TI Threshold	TI Seuil en aluminium
GP Ghidaj posterior din aluminiu	GP Rear runner in aluminium profile	GP Guide postérieur en aluminium anodisé
PS Role pentru glisare	PS Sliding wheels	PS Poulies de roulement
CBA Protectie sina din aluminiu	CBA Aluminium track cover	CBA Chace-rail en aluminium anodisé
COP Contracadru	COP Counter-frame	COP Contro-cadre